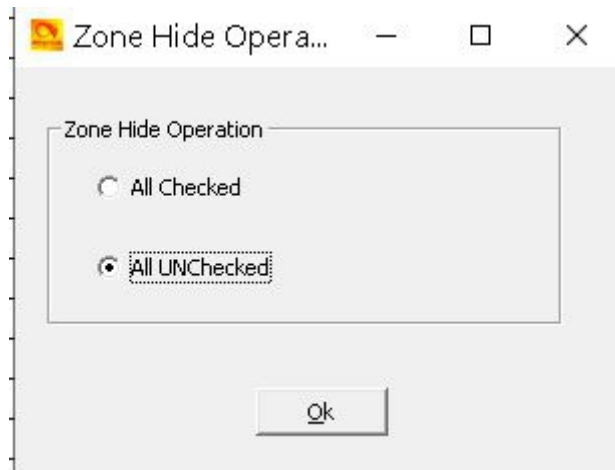


# Zone UP DOWN not working

I have the 878UV and i can not scroll through the zones using the centre control (up and down arrows). I saw a post about this issue but can not find it. Can anyone assist as to why this is happening?

CPS – Tool – Zone hide Operation:



**CLICK ON** = All UNchecked

**YOU MUST CLICK** = OK

<http://tiny.cc/Anytone-DMR>