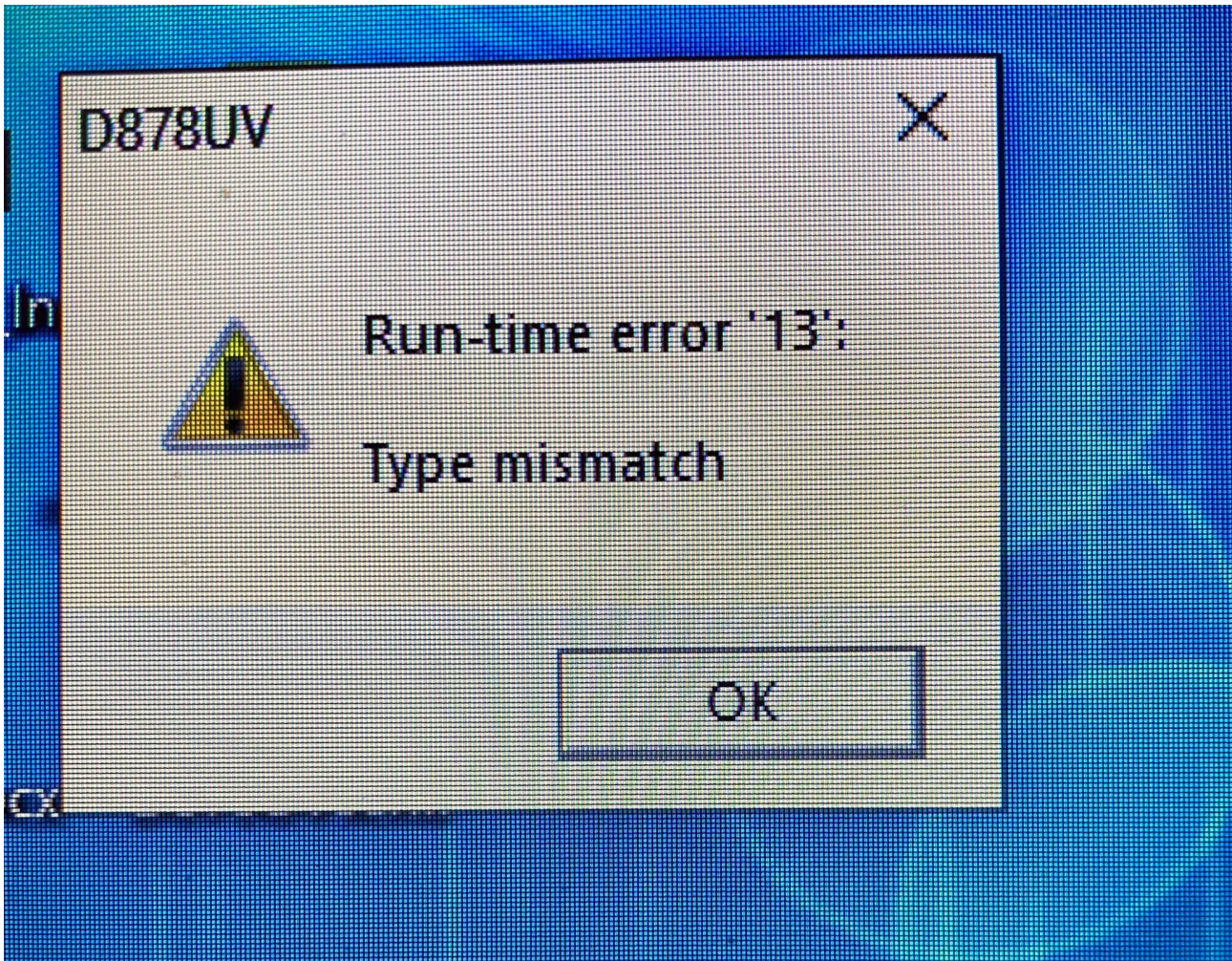


Run-Time error 13



Have you any off the below software install -

1. [Null-modem emulator](#)
2. [Virtual Serial Port Driver](#)

Uninstall the above software from your PC.

Anytone Engineer said "Run-Time error '13': Type mismatch" means the codeplug has some wrong data type, means the data request to input number , but it was incorrectly input characters.

<http://tiny.cc/AnytoneDMR>